



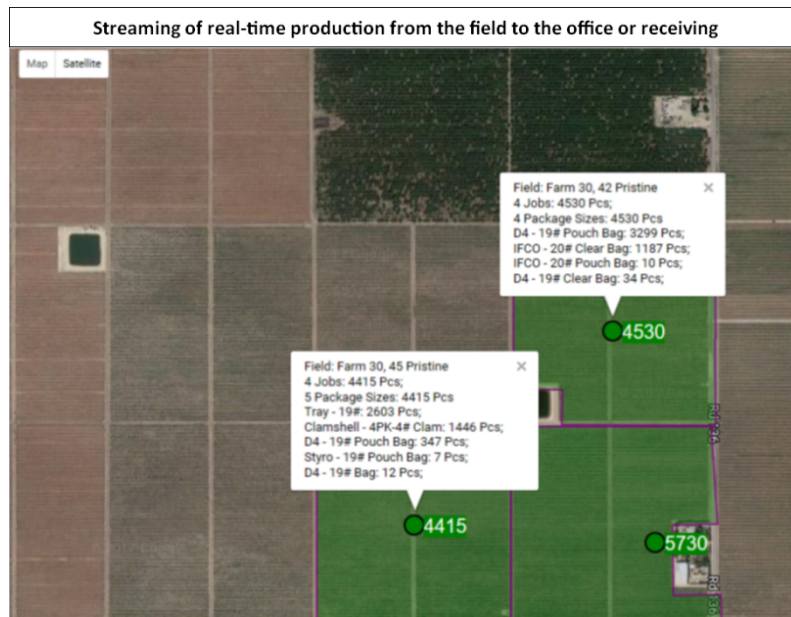
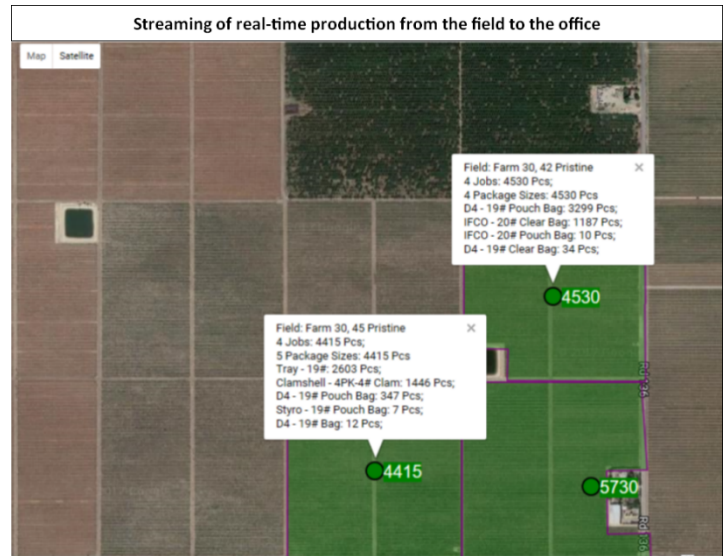
Orange Enterprises Inc
 Fresno, Oakland, CA
 (559) 229-2195
 (800) 656-7264
 www.TigerJill.com

time and attendance data for workers and assigns specific jobs to individual workers and crews using an iPhone or Android device as well as biometrics if needed.

Taking that further still, the PET system can provide you real time production data in auto generated reports, emails and present that information in real-time on large screen displays, your computer or smart devices.

Let PET Pocket watch your wallet - manage H2A workers and join the club of the innovative real time PET TIGER System to manage your labor, equipment and productivity with integration to your existing business applications.

Imagine seeing field production as it is happening and displaying that information in the sales, marketing and receiving areas! By electronically collecting the labor data, you'll greatly reduce the administrative time confirming the data is accurate and since the PET system integrates with Accounting and Payroll, it eliminates the time consuming, manual entry process.



Using the PET system to enforce breaks, lunches and other mandated requirements, means your labor contractor and yourself are in complete compliance with local, state, federal and union mandated requirements.

Orange Enterprises, Inc. with over 30 years of experience integrating software, computers, and system, incorporates the newest mobile and biometric technology into today's payroll accounting and logistics giving its user a seamless, paperless and wireless labor tracking solution.

Orange Enterprises, Inc. provides onsite and remote installation and training. Our support staff works closely with each user to insure they have addressed all the uniqueness of each operation.